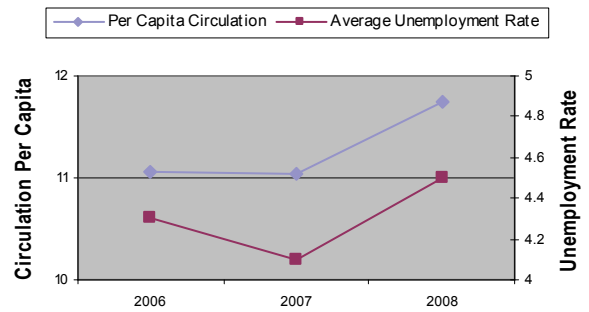


LIBRARIES SEE SIGNIFICANT INCREASES IN USE

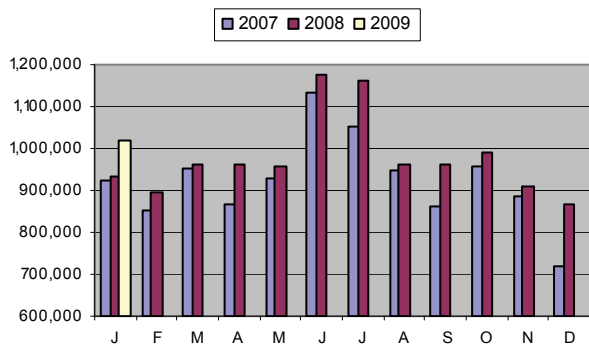
Public libraries in Kansas have seen significant increases in use during 2008. These increases appear to be attributable to the current economic conditions.

A recent survey conducted by the Kansas Library Association and the State Data Center found that library circulation in 2008 increased nearly 6% over the previous year. The most remarkable increases occurred during the fourth quarter, which was up 7.8% and December, which saw a 19.9% increase over the previous year.

Library Circulation and Unemployment Rate



Kansas Library Circulation by Month



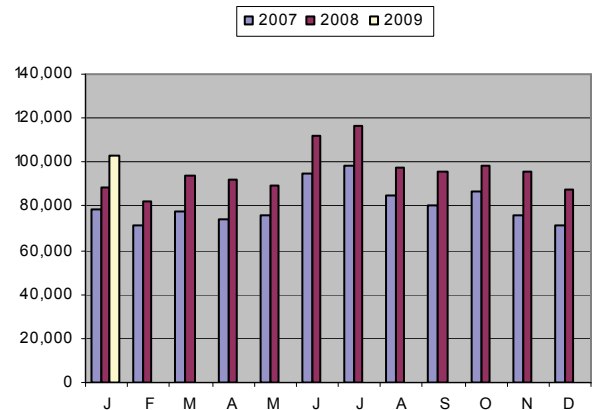
The study noted a significant correlation between per capita circulation and unemployment claims. In other words, as unemployment claims went up, library circulation increased by a similar rate. This finding suggests that, as the economy slows and unemployment increases, people are turning to their public libraries more.

KANSAS CITY KANSAS PUBLIC LIBRARY

The Kansas City Kansas Public Library system saw significant increases in library use between 2007 and 2008. Kansas Citizens visited the library 20.3% more often and checked out 18.6% more items in 2008 than in 2007. January 2009 circulation is up 16% over 2008 and 32% over January 2007.

The results of the survey also indicated a significant correlation between Kansas City's unemployment rate and the circulation rate at the public library.

KCKPL Monthly Circulation



QUOTES FROM THE LIBRARIES

"[W]e see new people weekly who have to file unemployment online who have never used a computer before. These folks are very sad cases as they are depressed to begin with and then feel even more inadequate because they don't know how to use a computer. I always mention the tech training classes to them and they are very grateful."

"We have had at least 2 major companies close ... many of the laid-off workers use our computers for looking for work, compiling resumes, applying for jobs and especially asking for help with all of those tasks, as many of them are not skilled in using computers and the Internet."



Prepared by the State Data Center at the State Library of Kansas. For more information, contact Peter Haxton at sdcenter@kslib.info or 785-296-2008.